

## Mapping probe sites to recording channels

In order to figure out which recording channel corresponds to a particular site on the tip of a particular probe you will need to obtain the site map for the probe from the probe manufacturer. Next, determine the appropriate adaptor for the probe given the type of headsets that you are using. Obtain the channel map for the probe adaptor and compare it to the site map of the probe. Follow the steps below.

### Specific Example:

#### 8 x 8 Acute 64 Rev 1 probe from NeuroNexus Technologies (N2T) with Plexon HST/32V-G20 headsets

The N2T site map from for this probe is re-produced on page 3 of this document.

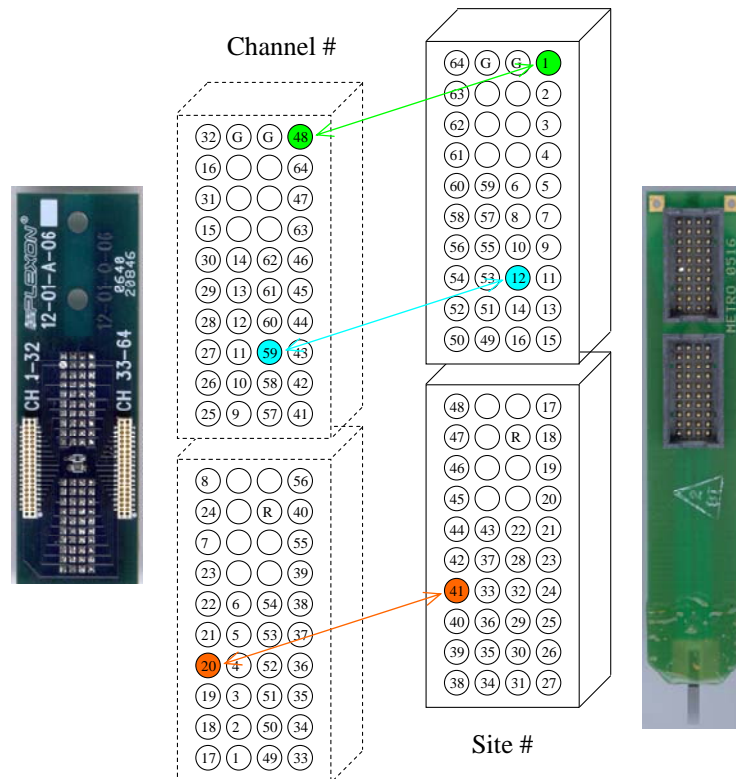
The appropriate adaptor for this probe is Plexon 12-01-A-06.

The adaptor channel map is contained in the Plexon document 12-01-A-06.

Combine the information in these two documents as follows:

### Step 1 – Overlay the adaptor channel map provided by Plexon with the probe site map provided by N2T.

The information from each diagram is reproduced below for your convenience.

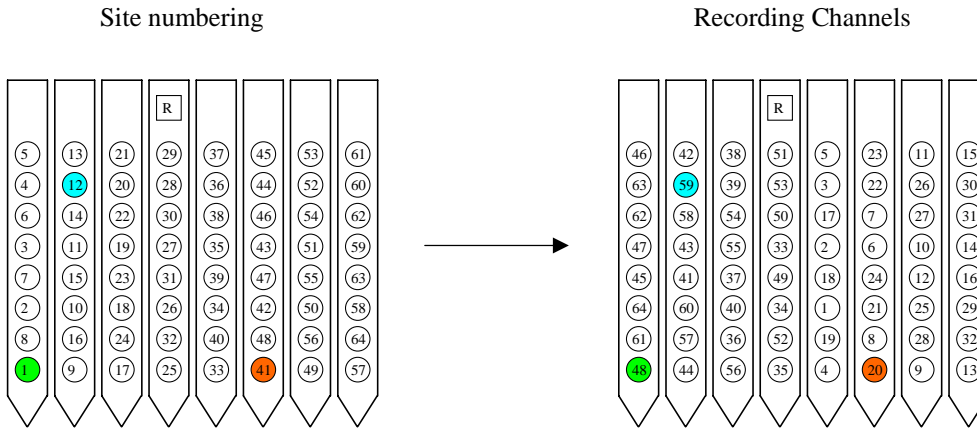


### Step 2 – Make a table of the channel number corresponding to each site

	Site number	Recording Channel
●	1	48
●	12	59
●	41	20
	...	

# Mapping probe sites to recording channels

**Step 3** – Re-draw the probe tip diagram using the recording channel numbers

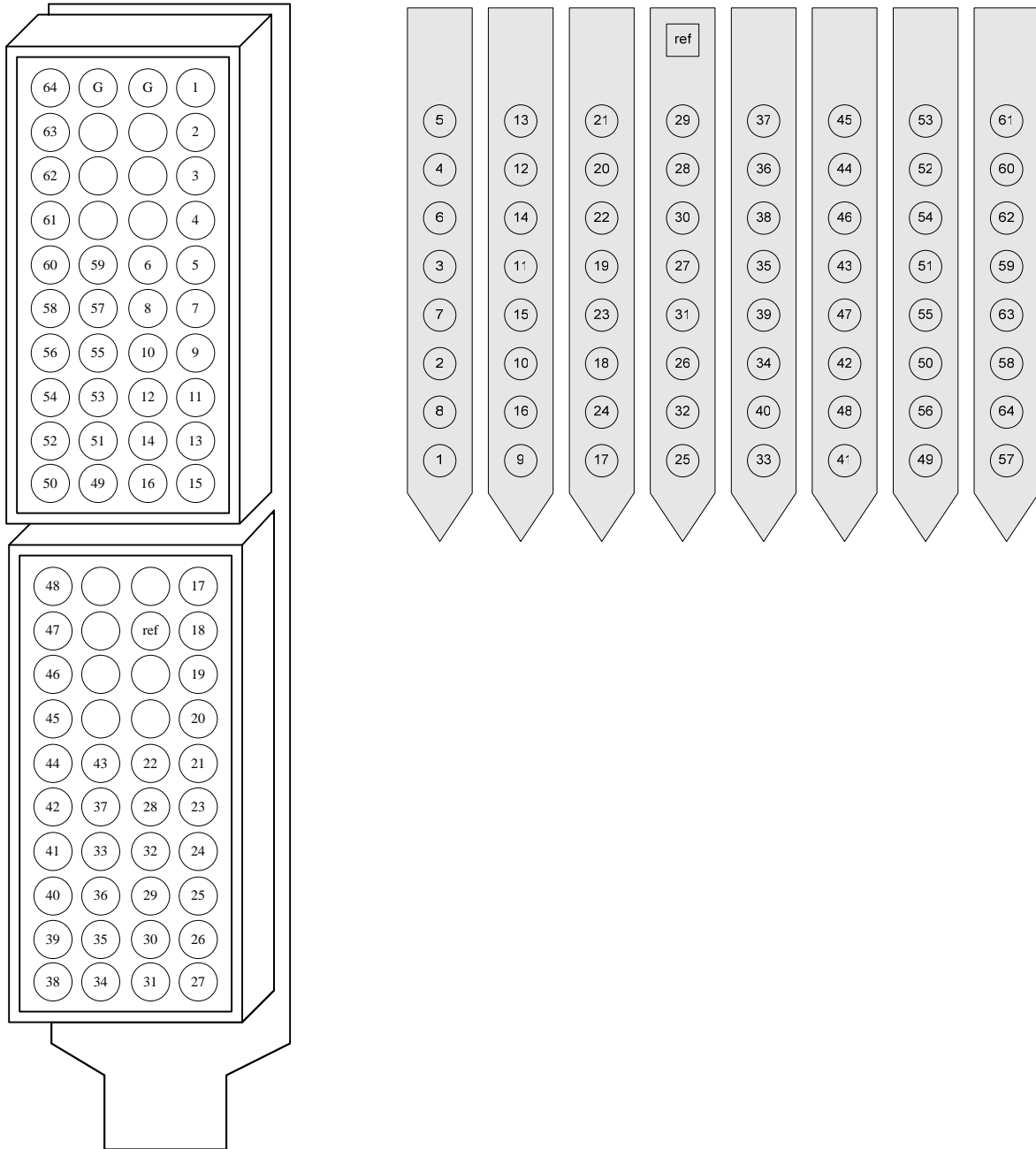


Revision	Description	Originator	Date
--	Initial Release ECO 24	CDP	10-30-06

## Probe Site Mapping

### Acute 64 Rev 1

PCB Top View  
Probe on the bottom side



\*To use Ground (G), it is necessary to solder wires to the two through hole pads on the top of the probe