

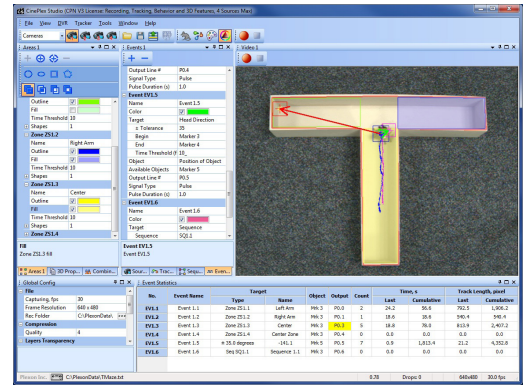
CinePlex Behavioral Research System for Electrophysiology

Plexon's CinePlex® System has high precision triggered cameras that are operated in full synchrony with neural data acquisition. It offers a full range of sophisticated recording operations in various environments and conditions. Additional specialized functionality is available through the following add-ons as needed and to varying degrees: CinePlex Tracking, CinePlex Basic Behavior and CinePlex 3D. In conjunction with the CinePlex System, CinePlex Editor is particularly valuable for those interested in simultaneous analysis of neural and behavioral data.



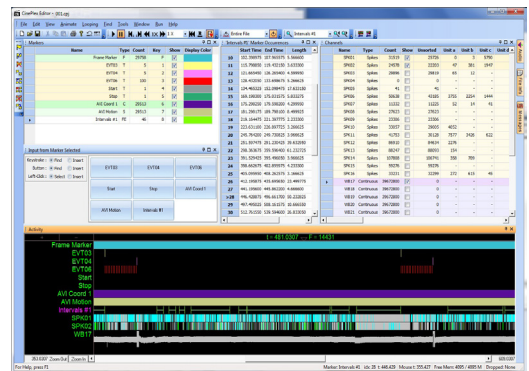
CinePlex Studio

- ◆ Synchronized video recording with neural data recording from Plexon Systems:
 - The OmniPlex® Neural Data Acquisition System
 - The Multichannel Acquisition Processor (MAP)
- ◆ Three advanced functionality modules:
 - CinePlex Tracking option including Object Contour Mode (whole body), LED Tracking Mode and two Reflective Color Tracking Modes
 - CinePlex Basic Behavior option with a variety of logical events based on entering zones, head direction, crossing speed thresholds and more
 - CinePlex 3D option that allows real-time and offline tracking in 3D space
- ◆ Triggered video capture for more accurate timestamping of video frames (25µsec accuracy)
- ◆ Low noise cameras: 640 x 480 resolution up to 200 frames per second; 960 x 960 high resolution up to 60 frames per second
- ◆ Simultaneous recordings from up to four cameras
- ◆ Standard AVI files with MPEG file compression for greatly reduced file size
- ◆ Detection and automatic removal of jitter



CinePlex Editor

- ◆ Integrated viewing of Plexon recorded neural data files (.PL2 and .PLX) and Plexon (CinePlex) recorded video files (.AVI files)
- ◆ Display of tracking position data overlaid on video
- ◆ Video-aided insertion of event markers and intervals
- ◆ Removal of temporal segments of neural data during artifact-generating behaviors (chewing, grooming, etc.)
- ◆ Seek and search based on event markers
- ◆ Freezing detection
- ◆ Save edited neural data to Plexon (.PLX) and NeuroExplorer (.NEX) files, or export to Excel®, MATLAB® or text files



CinePartner System

- ◆ Many benefits of the CinePlex System differentiated by the possibility of synchronization with third party products such as neural data acquisition systems
- ◆ Preferred over CineLyzer as a stand-alone system when the experiment requires extra high video quality, high timing precision and/or when requiring three dimensional tracking

PLEXON®, the five-line symbol, CereStage™, CineCorder™, CineLAB®, CineLyzer™, CinePartner™, CinePlex®, CineTracker™, CineTyper™, DigiAmp™, MiniDigi™, Offline Sorter™, OmniPlex®, PL2™, PlexBright®, PlexDrive™, PlexStim™, Radiant™ and RapidGrid™ are registered and unregistered trademarks of Plexon Inc, Dallas, Texas, USA. ©2016 Plexon Inc. All rights reserved. Other product and company names mentioned are trademarks of their respective owners.