



Adding CinePlex[®] Components to a Dell[®] Precision T5810 Computer with OmniPlex[®] Previously Installed

(CinePlex Version 3.5.0 and Later)

Technical Note
Document No. CPXTN0002a
(Initial Issue – May, 2017)

support@plexon.com

Copyright © 1983-2017 Plexon Inc. All rights reserved.

Plexon Inc Proprietary

The information contained herein is the property of Plexon Inc and it is proprietary and restricted solely to assist Plexon Inc customers. Neither this document nor the contents may be disclosed, copied, revealed or used in whole or in part for any other purpose without the prior written permission of Plexon Inc. This document must be returned upon request of Plexon Inc.

Information is subject to change without notice. Plexon Inc reserves the right to make changes in equipment design or components as progress in engineering or manufacturing may warrant.

PLEXON[®], Plexon[®], the five-line symbol, CereStage[™], CineCorder[®], CineLAB[®], CineLyzer[®], CinePartner[™], CinePlex[®], CineTracker[®], CineTyper[™], DigiAmp[™], MiniDigi[™], Offline Sorter[™], OmniPlex[®], PL2[™], PlexBright[®], PlexDrive[™], PlexSort[®], PlexStim[™], Plectrode[®], Radiant[™], RapidGrid[™], TrackSort[®] and the Plexon logo are trademarks of Plexon Inc, Dallas, Texas, USA. Other product and company names mentioned are trademarks of their respective owners.



Introduction

This document explains how to add CinePlex components to a Dell Precision 5810 computer on which OmniPlex components have previously been installed.

It is assumed that the computer and OmniPlex System were previously prepared and tested in the Plexon factory prior to shipment.

Technical Support

Plexon technical support is available by telephone at (+1) 214-369-4957 or by email at support@plexon.com.

Additional Resources

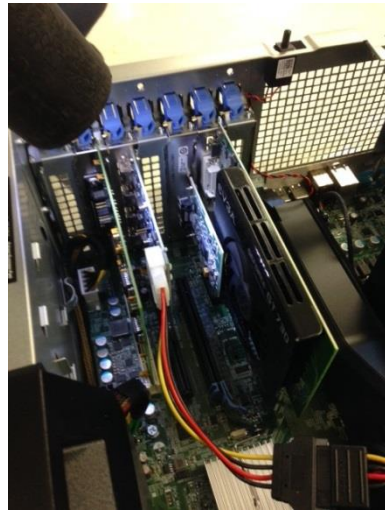
For detailed product descriptions and configuration options, see the CinePlex and OmniPlex user guides on the Plexon website, www.plexon.com.

Installation Procedure

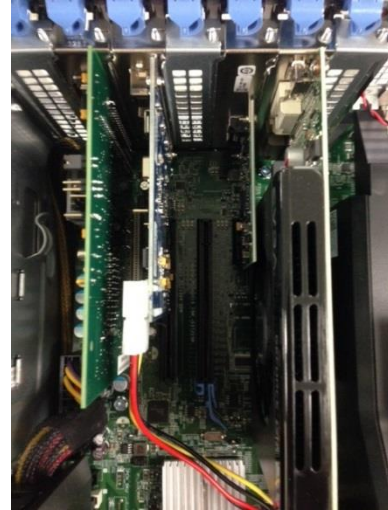
1. Install the AccesIO and FireWire cards in the order on the motherboard as shown in the pictures below:



1



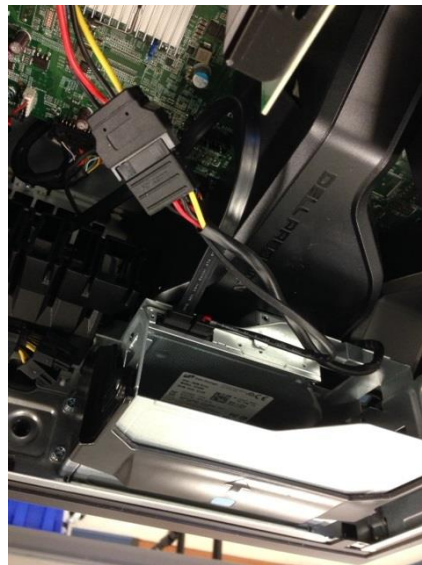
2



3



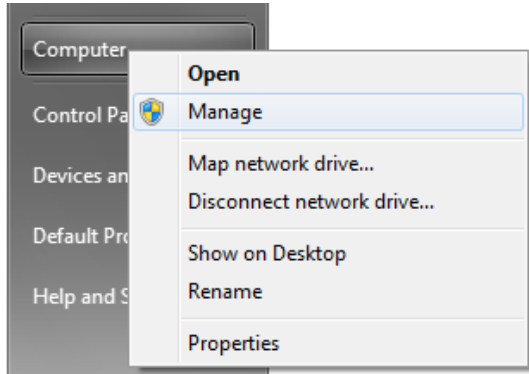
4



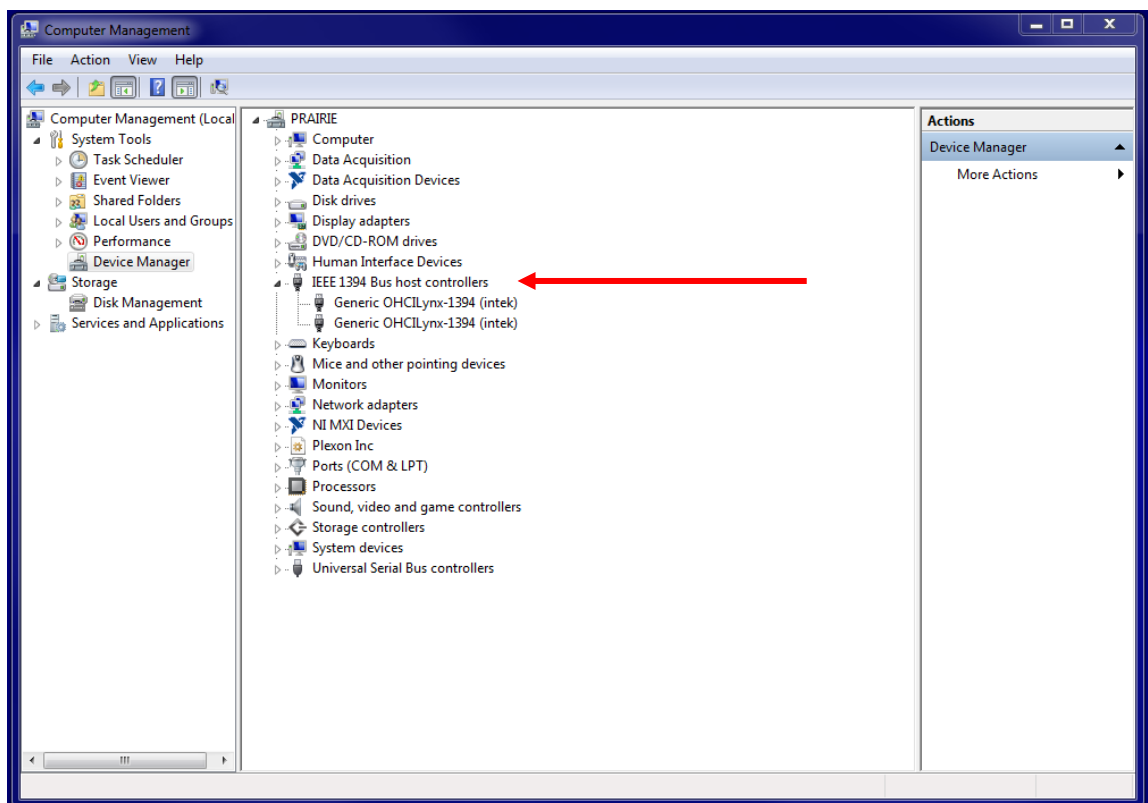
5

2. Plug in the power cable for the FireWire card.
Power has to be supplied to the FireWire card using the FireWire cable.
Refer to pictures 2 and 5 above.

3. Go to “Start” and right click on “Computer.” Click the “Manage” button and this will take you to the “Computer Management” screen.



4. Click on “Device Manager” and look under “IEEE 1394 Bus host controllers.” If a FireWire card has been fully installed, you will see a display like the one here:

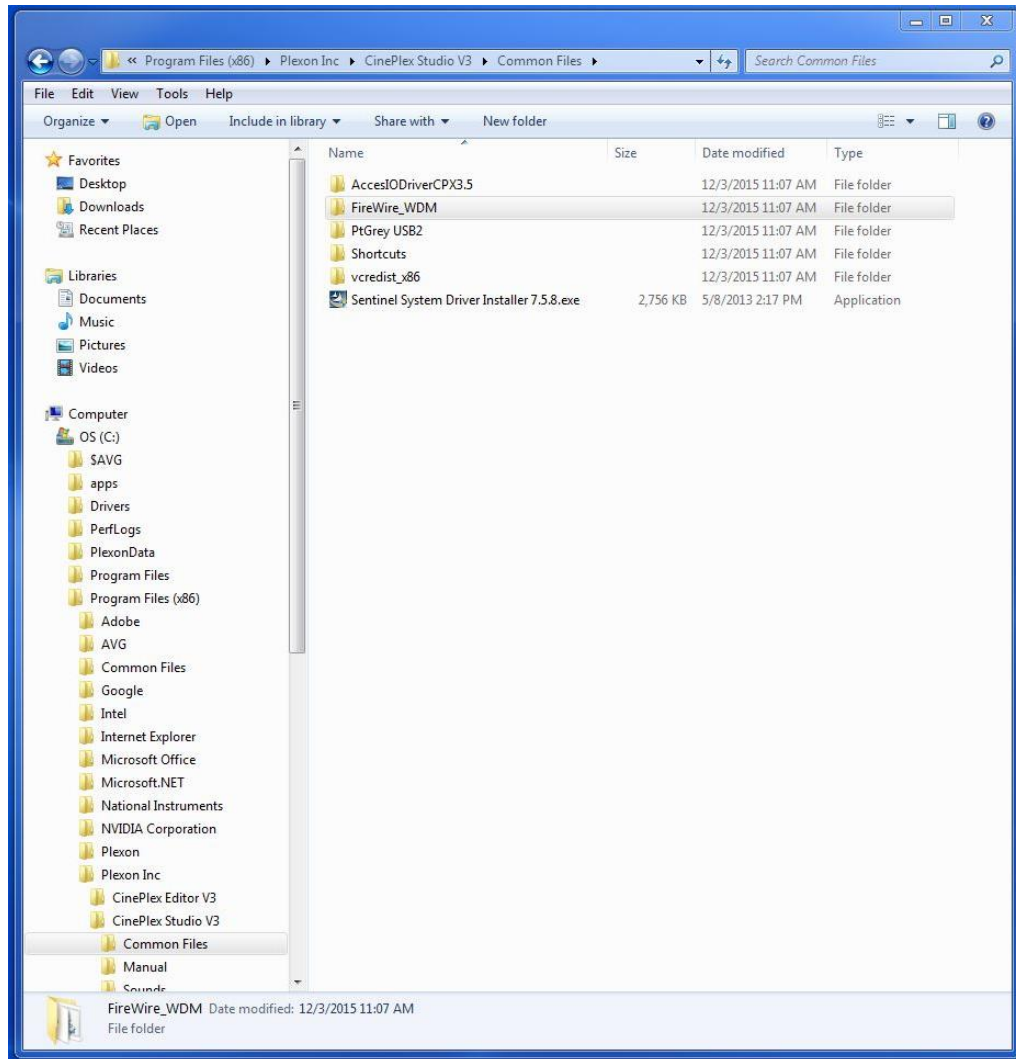


If “intek” is not showing up, that means you need to install the FireWire drivers.

If FireWire drivers need installing:

- a. Follow the path shown in the screenshot below to get to the “FireWire_WDM” folder. The path is

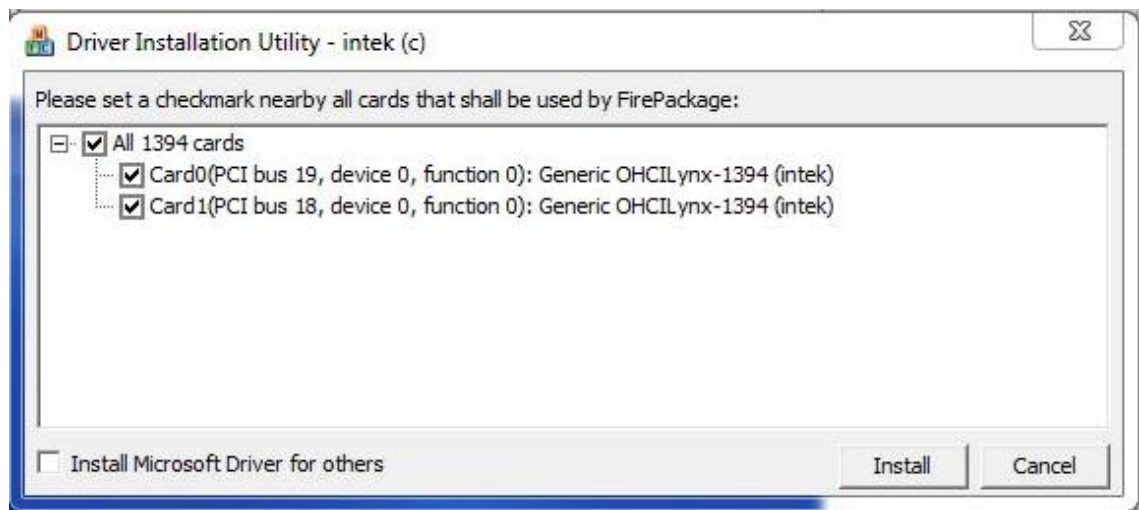
Start → Computer → OS (C:) → Program Files (x86) → Plexon Inc
→ CinePlex Studio V3 → Common Files:



****Note:** If, for whatever reason, you do not have access to this path, this “FireWire_WDM” folder has been placed on the Plexon FTP Server. Please email support@plexon.com if you have questions on how to get to this.

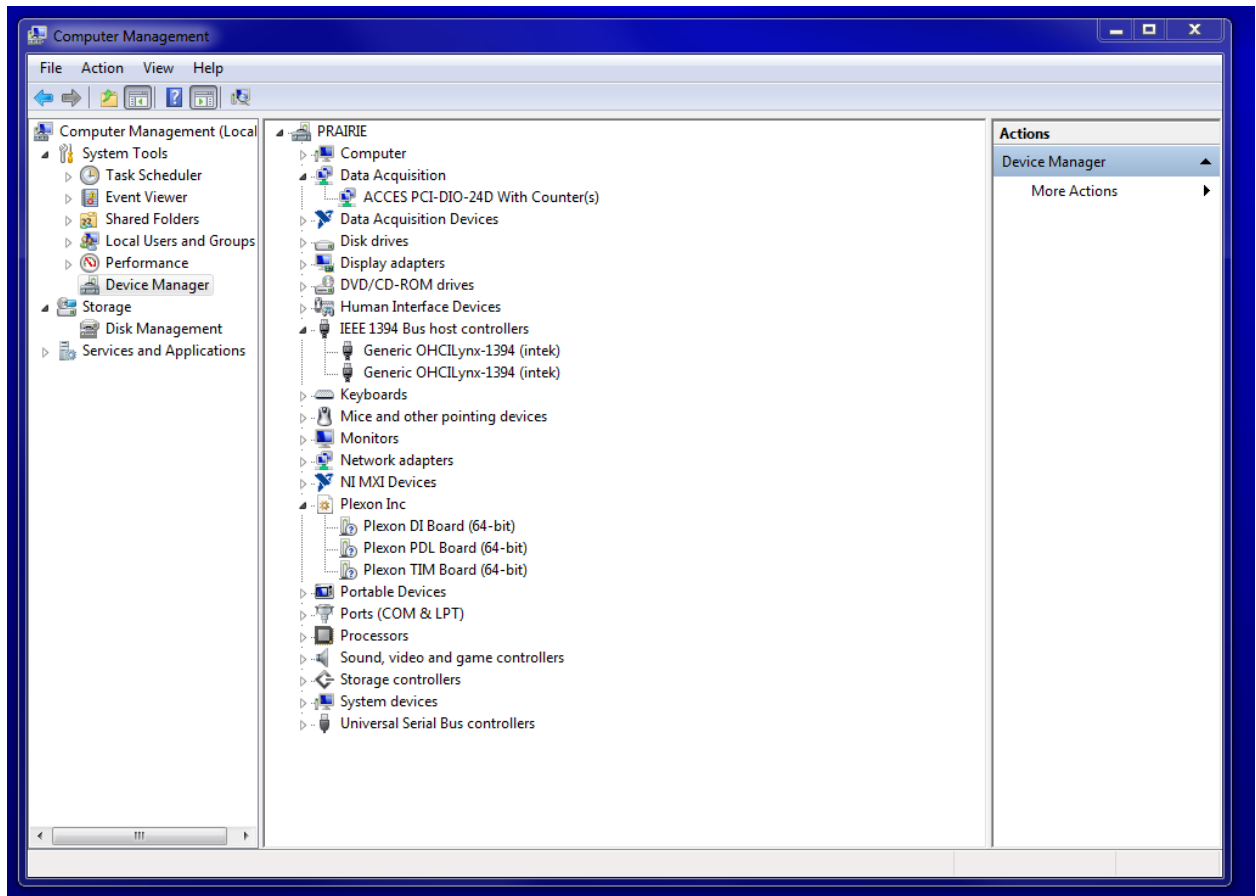
- b. Once inside this “FireWire_WDM” folder, click on “SvcInst.exe” and click “Yes” to make changes to the computer.

- c. You should then be at the “Driver Installation Utility – intek (c)” screen; ensure all the boxes are checked, as in the image below:



- d. Click “Install.”
5. If you have any issues regarding installation of the AccesIO card, refer to the PDF file titled “AccesIO Installation Procedure.” Please email support@plexon.com if you would like access to this document.

- Now, to verify that everything has been fully installed properly, follow Steps 3 and 4 from above to get back to the “Device Manager” screen. This screen should now look like this:



In the screenshot above, the places of interest to look are:

- “Data Acquisition” (addresses AccesIO card)
- “IEEE 1394 Bus host controllers” (addresses FireWire card)
- “Plexon Inc” (addresses the OmniPlex hardware which should already be set up). If you are using an OmniPlex “A” System or OmniPlex DigiAmp/MiniDigiAmp System, then you will see “Plexon PSL Board” instead of “Plexon PDL Board.”

This page intentionally left blank